

- DESIGN DRAWINGS ARE SCHEMATIC. THE CONTRACTOR SHALL VISIT THE SITE PRIOR TO BIDDING OR AWARD OF CONTRACT TO INSPECT EXISTING FIELD CONDITIONS. THE CONTRACTOR SHALL INCLUDE ALL LABOR AND MATERIALS NECESSARY FOR FIELD MODIFICATIONS DUE TO EXISTING CONDITIONS.
2. THE CONTRACTOR SHALL CONTACT THE ARCHITECT, ENGINEER OR TENANT PRIOR TO BIDDING FOR INTERPRETATIONS AND CLARIFICATIONS OF THE DESIGN AND INCLUDE IN THIS BID ALL COSTS TO MEET THE ARCHITECT'S OR TENANT'S CLARIFICATIONS MADE BY THE ARCHITECT, ENGINEER OR TENANT AFTER BIDDING WILL BE FINAL AND SHALL BE IMPLEMENTED AT THE CONTRACTORS COST.
3. BIDDING CONTRACTORS SHALL HAVE A WORKING KNOWLEDGE OF LOCAL CODES AND ORDINANCES AND SHALL INCLUDE IN THEIR BIDS THE COSTS FOR ALL WORK INSTALLED IN STRICT ACCORDANCE WITH GOVERNING CODES, THE PLANS AND SPECIFICATIONS NOT WITHSTANDING, THE CONTRACTOR SHALL ALERT ARCHITECT, ENGINEER OR TENANT OF ANY APPARENT DISCREPANCIES BETWEEN GOVERNING CODES AND DESIGN INTENT.
4. REFER TO MECHANICAL PLAN FOR LOCATION OF MECHANICAL EQUIPMENT. FIELD VERIFY EXACT LOCATIONS. PROVIDE ALL CONVENIENCE RECEPTACLES, SAFETY SWITCHES, WIRING, OR OTHER EQUIPMENT TO ENSURE A COMPLETE AND OPERABLE HVAC SYSTEM.
5. ALL CEILING MOUNTED RECEPTACLES AND COVERPLATES IN WHITE CEILING SHALL BE WHITE.
6. ALL WALL MOUNTED RECEPTACLES, SWITCHES, AND COVERPLATES SHALL BE WHITE.
7. CONDUIT FOR DATA/TELEPHONE OUTLETS AND LOW VOLTAGE CABLING SHALL HAVE A PULL/JUNCTION BOX INSTALLED AFTER EACH SET OF THREE 90 DEGREE BENDS.
8. LABEL ALL COVERPLATES ON INSIDE FACE OF PLATE WITH CIRCUIT NUMBER AND PANEL DESIGNATION. I.E. "A-1". CIRCUIT SHALL BE WRITTEN WITH PERMANENT MARKER IN A CONTRASTING COLOR.
9. GENERAL CONTRACTOR SHALL PROVIDE ALL REQUIRED TELEPHONE, DATA, LOW VOLTAGE CABLING AND MAKE NECESSARY CONNECTIONS.
10. CONDUIT FOR SPEAKER, TELEPHONE AND DATA CABLING FROM CASHMIRAP SHALL STUB OUT BELOW THE CEILING ABOVE BACKBOARD WITH A BUSHING TO PROTECT THE CABLE FROM THE EDGES OF THE CONDUIT.
11. ALL HORIZONTAL CABLING FOR VOICE AND DATA SHALL BE CATEGORY 5E RATED.
12. PROVIDE ALL BACKBOXES AND CONDUIT FOR THE COMMUNICATIONS OUTLETS.
13. ALL CABLES AND DEVICES TO BE INSTALLED ABOVE FINISHED CEILING SHALL BE PLENUM RATED OR IN CONDUIT.
14. REFER TO SPECIFICATIONS SECTIONS 26 27 26 WIRING DEVICES, FOR EXACT MODEL NUMBER OF DEVICES TO BE USED.
15. FIELD VERIFY ALL CONDITIONS.
16. FIRE ALARM PLANS MUST BE ENGINEERED AND WET SIGNED AND SEALED BY A LANDLORD APPROVED, LICENSED, REGISTERED FIRE ALARM CONTRACTOR IN THE LOCAL JURISDICTION. GENERAL CONTRACTOR SHALL FIELD VERIFY AND COORDINATE REQUIREMENTS WITH LANDLORD PRIOR TO BID AND INCLUDE THE COST OF THIS WORK IN THIS BID.

- ELECTRICAL SERVICE EQUIPMENT: EXISTING ELECTRICAL EQUIPMENT TO REMAIN AS NOTED IN GENERAL NOTES, SPECIFICATIONS, AND AS SHOWN ON FLOOR PLANS, AND RISER DIAGRAM. MAINTAIN CODE REQUIRED CLEARANCES FOR ALL EQUIPMENT PER NEC 110.26.
2. CASHNAP AND BACKWAP UTILITY RECEPTABLES:
20 AMP, 120V, ISOLATED GROUND, DEDICATED CIRCUIT, QUADRUPEX RECEPTABLE AT BACKWAP FOR UTILITY POWER. NEW DEVICES SHALL BE LOCATED IN THE SAME LOCATION AS THE EXISTING DEVICES. LOCATE AS DIRECTED BY TENANT/ARCHITECT. CONNECT CIRCUIT AS INDICATED. REFER TO CODED NOTE #12 AND #13 FOR CONDUIT REQUIREMENTS.
3. CASHNAP DEDICATED RECEPTABLE:
20 AMP, 120V, ISOLATED GROUND, DEDICATED CIRCUIT, QUADRUPEX RECEPTABLE FOR EACH CASH REGISTER. NEW DEVICES SHALL BE LOCATED IN THE SAME LOCATION AS THE EXISTING DEVICES. LOCATE AS DIRECTED BY TENANT/ARCHITECT. CIRCUIT AS INDICATED. PROVIDE A SEPARATE ISOLATED GROUND CONDUCTOR FOR EACH CIRCUIT. DO NOT INSTALL WITH ANY NON-ISOLATED GROUND CIRCUITS. REFER TO CODED NOTE #12 FOR CONDUIT REQUIREMENTS.
4. CASHNAP TELEPHONE OUTLET:
TELEPHONE OUTLET FOR CASH REGISTER, USE 4" SQUARE BOX. PROVIDE CABLING AND MAKE FINAL CONNECTIONS. NEW DEVICES SHALL BE LOCATED IN THE SAME LOCATION AS THE EXISTING DEVICES. COORDINATE EXACT REQUIREMENTS/LOCATIONS WITH TENANT/ARCHITECT. REFER TO CODED NOTE #12 FOR CONDUIT REQUIREMENTS.
5. CASHNAP DATA OUTLET:
DATA OUTLET FOR CASH REGISTER, USE 4" SQUARE BOX. PROVIDE CABLING AND MAKE FINAL CONNECTIONS. NEW DEVICES SHALL BE LOCATED IN THE SAME LOCATION AS THE EXISTING DEVICES. COORDINATE EXACT REQUIREMENTS/LOCATIONS WITH TENANT/ARCHITECT. REFER TO CODED NOTE #12 FOR CONDUIT REQUIREMENTS.
6. TELEPHONE BOARD:
GRADE 44x44x4" PLYWOOD TELEPHONE BOARD PAINTED WITH (2) COATS OF FIRE RETARDANT PAINT, MOUNTED VERTICALLY. INSTALL DURING WEEK #2 OF CONSTRUCTION. PAINT BEFORE EQUIPMENT IS INSTALLED. REFER TO SHEET E3.0, DETAIL 'L' FOR MORE INFORMATION.
7. SECURITY SYSTEM:
20 AMP, 120V, ISOLATED GROUND, DEDICATED CIRCUIT, QUADRUPEX RECEPTABLE AND DATA OUTLET FOR ADT SECURITY SYSTEM. COORDINATE EXACT REQUIREMENTS WITH SECURITY VENDOR. DO NOT INSTALL RECEPTABLE CIRCUIT WITH ANY OTHER CIRCUITS. REFER TO SHEET E3.0, DETAIL 'L' FOR MORE INFORMATION.
8. TELEPHONE BOARD RECEPTABLE:
20 AMP, 120V, ISOLATED GROUND, DEDICATED CIRCUIT, QUADRUPEX RECEPTABLE FOR TELEPHONE BOARD EQUIPMENT. DO NOT INSTALL WITH ANY OTHER CIRCUITS. REFER TO DETAIL 'L' CODED NOTE #5 ON SHEET E3.0 FOR MORE INFORMATION.
9. SOUND SYSTEM:
20 AMP, 120V, ISOLATED GROUND, DEDICATED CIRCUIT, QUADRUPEX RECEPTABLE, DO NOT INSTALL WITH ANY OTHER CIRCUITS. PROVIDE (2) 4" X 4" JUNCTION BOXES WITH COVERED AND A CONDUIT BETWEEN THE BOXES. MOUNT ONE BOX AT 72" AFF AND THE OTHER BOX ABOVE THE CEILING (IF NO CEILING MOUNT BOX AT 12" AFF). REFER TO SHEET E3.0, DETAIL 'L' FOR MORE INFORMATION.
10. SHOPPER TRACK:
EXACT LOCATION OF CEILING MOUNTED SHOPPER TRACK SENSOR SHALL BE DETERMINED BY VENDOR. PROVIDE 3/4" CONDUIT, BUSHINGS ON ENDS AND CAT 5E CABLE (WITH 5' COILED AT EACH END) FROM TELEPHONE BOARD TO WITHIN 2 FEET OF ENTRY DOORS. USE SEPARATE CONDUIT FOR EACH SENSOR. MOUNT EACH SET OF ENTRY DOORS. MARK SHOPPER TRACK CONDUIT AT TELEPHONE BOARD (SHOPPER TRACK). GENERAL CONTRACTOR SHALL MARK LOCATIONS OF CONDUIT END POINTS ON AS-BUILTS.
11. WIRELESS ACCESS POINT (WAP):
RELOCATE EXISTING WIRELESS ACCESS POINT. EXTEND CONDUIT FROM EXISTING WAP LOCATION TO NEW LOCATION. EXTEND CABLING, INSTALL DEVICE AND MAKE FINAL CONNECTIONS. MARK CONDUIT AT TELEPHONE BOARD 'WIFI'. ALIGN EACH WAP WITH LIGHT FIXTURES AS INDICATED ON ARCHITECTURAL REFLECTED CEILING PLAN.
12. CASHNAP CONDUITS (FIVE (1) CONDUITS):
• ONE 1" CONDUIT FOR TELEPHONE CABLING.
• ONE 1" CONDUIT FOR DATA CABLING.
• TWO 1" CONDUITS FOR CASHNAP RECEPTABLES.
• ONE 1" SPARE CONDUIT WITH PULL STRING.
CONDUIT SHALL BE CONTINUOUS FROM CASHNAP ACCESS AREA IN THE BOTTOM OF THE CASHNAP BACK TO TELEPHONE BOARD. LABEL CONDUIT AT EACH END APPROPRIATELY. PULL CAT 5E CABLE (WITH 5' COILED AT EACH END) FOR TELEPHONE AND DATA. COORDINATE WITH LANDLORD PRIOR TO WORK COMMENCING.
13. BACKWAP CONDUITS (TWO (1) CONDUITS):
• ONE 1" CONDUIT WITH J-BOX FOR DATA CABLING.
• ONE 1" CONDUIT WITH J-BOX FOR BACKWAP RECEPTABLE.
CONDUIT SHALL BE CONTINUOUS FROM JUNCTION BOX BACK TO PANELBOARD OR TELEPHONE BOARD. LABEL CONDUITS AT EACH END APPROPRIATELY. PULL CAT 5E CABLE (WITH 5' COILED AT EACH END) FOR TELEPHONE AND DATA. COORDINATE WITH LANDLORD PRIOR TO WORK COMMENCING.
14. UNDER FLOOR CONDUIT (GENERAL CONTRACTOR TO USE APPROPRIATE METHOD):
TRENCH: (1) COMMON TRENCH FOR CONDUITS RUN BELOW FLOOR. TRENCHING AND CONDUIT TO BE EXTENDED FROM EXISTING PANEL AT THE BOTTOM OF THE CASHNAP, TO INSIDE NEAREST FULL HEIGHT WALL. TRENCHING AND PATCH AS REQUIRED. GENERAL CONTRACTOR TO VERIFY WITH LANDLORD FLOOR SLAB SAW CUTTING/TRENCHING REQUIREMENTS PRIOR TO BID.
CORE: ONE (1) INDIVIDUAL CORE FOR CONDUITS IN FLOOR. CORE AND PATCH AS REQUIRED. GENERAL CONTRACTOR TO VERIFY WITH LANDLORD CORING REQUIREMENTS PRIOR TO START OF WORK. PER LANDLORD, TENANT CONTRACTOR MAY NOT TRENCH/SAW CUT SLAB ANY BELOW SLAB WIRING. IF APPROVED BY LANDLORD REPRESENTATIVE, MUST BE INSTALLED IN RIGID CONDUIT ATTACHED TIGHTLY TO THE UNDERSIDE OF THE DECK. ROUTING OF THE CONDUIT MUST BE PARALLEL OR PERPENDICULAR TO THE BEAMS. ANY FLOOR OUTLETS, IF APPROVED BY LANDLORD'S REPRESENTATIVE, MUST BE PROPERLY RATED AND FIRESTOPPED TO MAINTAIN THE FLOOR/CEILING ASSEMBLY RATING.
15. SHOW WINDOW RECEPTABLE - CEILING:
DUPEX RECEPTABLES WITH 'SF' DESIGNATION SHALL BE MOUNTED FLUSH IN CEILING AT STOREFRONT PARALLEL TO STOREFRONT GLASS. REFER TO ARCHITECTURAL SHEETS FOR LOCATIONS. COORDINATE WITH LOCAL ARCHITECTURAL ELEMENTS AND TRACK LIGHTS. HOMERUN CIRCUIT THROUGH CONTRACTOR CONTROLLED BY TIME CLOCK. REFER TO LIGHTING CONTROL DETAIL 'N' ON SHEET E3.0.
16. SALES FLOOR DUPEX RECEPTABLE:
LOCATIONS ARE TO BE CONFIRMED WITH TENANT'S REPRESENTATIVE PRIOR TO INSTALLATION.
17. SECURITY DOME:
SECURITY CAMERA (DOME) FOR CCTV SYSTEM. REFER TO CCTV SYSTEM DETAIL 'B' ON SHEET E3.0 FOR INSTALLATION REQUIREMENTS. EQUIPMENT IS OWNER FURNISHED AND INSTALLED.
18. CCTV SYSTEM:
PROVIDE 20 AMP, 120V, ISOLATED GROUND, DEDICATED CIRCUIT, QUADRUPEX RECEPTABLE FOR CCTV SECURITY SYSTEM. COORDINATE EXACT LOCATION IN FIELD WITH SECURITY VENDOR. REFER TO CCTV SYSTEM DETAIL 'B' ON SHEET E3.0 FOR ADDITIONAL INFORMATION.
19. TELEPHONE CONDUIT:
LANDLORD PROVIDED TELEPHONE CONDUIT TO THIS SPACE. TELEPHONE COMPANY TO MAKE ACTUAL CONNECTION.
20. WATER HEATER:
PROVIDE A 20 AMP MOTOR RATED SWITCH FOR WATER HEATER - 1.65 KW, 120V. CIRCUIT AS INDICATED. REFER TO PLUMBING PLAN SHEET M3.0 FOR MOUNTING INFORMATION.
21. DELIVERY BUZZER SYSTEM:
RELOCATE BUZZER FROM EXISTING CASHNAP TO RELOCATED CASHNAP LOCATION. EXTEND CIRCUITING AS NEEDED TO PROVIDE A FUNCTIONING SYSTEM. EXISTING EDWARDS #552 PUSH-BUTTON AT REAR DOOR, #542 TRANSFORMER TO REMAIN.
22. SOUND SYSTEM:
INSTALL OWNER PROVIDED SPEAKERS/BACKBOXES AS SHOWN. PROVIDE 3/4" CONDUIT, DAISY CHAINED FROM SPEAKER BOX LOCATIONS TO JUNCTION BOX AT MANAGERS DESK. GENERAL CONTRACTOR TO MONITOR AND VERIFY CORRECT LOCATION OF SPEAKERS. SPEAKER WIRE SHALL BE 16/2 PLENUM RATED EQUAL TO BELDEN #6200-UE.
23. SECURITY KEYPAD:
KEYPAD PROVIDED AND INSTALLED BY OTHERS. GENERAL CONTRACTOR TO PROVIDE 4" SQUARE BACK BOX AND 1" CONDUIT UP TO STRUCTURE. PROVIDE BUSHING ON THE END OF CONDUIT.
24. HVAC RECEPTACLE:
PROVIDE GFI DUPEX RECEPTACLE ADJACENT TO UNIT IF NOT FURNISHED WITH EQUIPMENT. CIRCUIT AS INDICATED, FURNISH WEATHER PROOF ENCLOSURES AND COVERS AS REQUIRED.
25. MECHANICAL EQUIPMENT CONNECTIONS:
LANDLORD PROVIDED FEEDERS AND DISCONNECTS PER MECHANICAL EQUIPMENT FEEDER/CONNECTION SCHEDULE. REFER TO DETAIL 'L' ON SHEET E4.0.
26. HVAC THERMOSTAT/SENSOR:
THERMOSTAT/SENSOR LOCATION TO BE COORDINATED WITH TENANT. PROVIDE 4" SQUARE BACKBOX, SINGLE GANG PLASTER RING AND 1/2" CONDUIT WITH PULL STRING BETWEEN THERMOSTAT/SENSOR AND BACKBOX.

- DUCT-SMOKE DETECTOR/REMOTE TEST STATION:
DUCT MOUNTED SMOKE DETECTOR IS EXISTING IN UNIT- GENERAL CONTRACTOR SHALL INTERLOCK SMOKE DETECTOR WITH HVAC UNIT- REMOTE TEST ALARM STATION- AND FIRE ALARM SYSTEM- MAKE ALL FINAL CONNECTIONS AS REQUIRED FOR A COMPLETE SYSTEM- HVAC UNIT TO SHUT-DOWN UPON ACTIVATION OF SMOKE DETECTOR- COORDINATE WITH LANDLORD -TO AVOID CONFLICTS IN FIELD:
28. RFID DATA OUTLET --- CEILING:
DATA OUTLET FOR RFID, PROVIDE J-BOX, CABLING, BLANK WHITE COVER, 3/4" CONDUIT WITH BUSHINGS ON THE ENDS FROM TELEPHONE BOARD TO ENTRY DOORS- REFER TO ARCHITECTURAL SHEETS FOR EXACT LOCATIONS:
29. RFID RECEPTACLE --- CEILING:
DUPLEX RECEPTACLE FOR RFID BE MOUNTED FLUSH IN CEILING ADJACENT TO RFID DATA OUTLET- REFER TO ARCHITECTURAL SHEETS FOR EXACT LOCATIONS:
30. RFID DATA OUTLET --- WALL:
DATA OUTLET FOR RFID, PROVIDE J-BOX, CABLING, BLANK WHITE COVER, 3/4" CONDUIT WITH BUSHINGS ON THE ENDS FROM TELEPHONE BOARD TO AREA ABOVE DOOR.
31. RFID RECEPTACLE --- WALL:
DUPLEX RECEPTACLE SHALL BE MOUNTED FLUSH IN WALL ADJACENT TO RFID DATA OUTLET:
32. BACKWRAP DATA OUTLETS:
DATA OUTLET AND RFID OUTLET FOR BACKWRAP, PROVIDE J-BOX, CABLING AND MAKE FINAL CONNECTION. COORDINATE EXACT REQUIREMENTS/LOCATIONS WITH TENANT/ARCHITECT. REFER TO CODED NOTE #13 FOR CONDUIT REQUIREMENTS.
33. MANAGERS DESK:
20 AMP, 120V, ISOLATED GROUND, DEDICATED CIRCUIT; DUPLEX RECEPTACLE AND DATA/COMM OUTLET MOUNTED AT 24" AFF. COORDINATE EXACT REQUIREMENTS/LOCATIONS WITH TENANT/ARCHITECT.
34. BOM REGISTER:
20 AMP, 120V, ISOLATED GROUND, DEDICATED CIRCUIT; QUADRUPLEX RECEPTACLE AND 4" SQUARE J-BOX WITH SINGLE GANG PLASTER RING AND 3/4" CONDUIT TO TELEPHONE BOARD.
35. FIRE ALARM SYSTEM-JUNCTION BOX:
PROVIDE FIRE ALARM JUNCTION BOX- COORDINATE FINAL TIE-IN AND TESTING OF FIRE ALARM SYSTEM- FIELD VERIFY EXACT LOCATION AND REQUIREMENTS PRIOR TO BID- REFER TO FIRE ALARM RISER DIAGRAM AND NOTES, DETAIL 'R' ON SHEET E-4.0 FOR ADDITIONAL INFORMATION:
36. FIRE ALARM MANUAL PULL STATION:
PROVIDE FIRE ALARM MANUAL PULL STATION, CONNECT TO TENANT'S JUNCTION BOX TO TIE INTO LANDLORD'S MAIN FIRE ALARM SYSTEM- FIELD VERIFY EXACT LOCATION AND REQUIREMENTS:
37. FIRE ALARM HORN/STROBE:
PROVIDE FIRE ALARM CEILING MOUNTED STROBE, AND CONNECT TO TENANT'S JUNCTION BOX TO TIE INTO LANDLORD'S MAIN FIRE ALARM SYSTEM- FIELD VERIFY EXACT LOCATION AND REQUIREMENTS- THE DEVICE SHALL BE WHITE WITH RED LETTERS. (C)- INDICATES CEILING MOUNTED FIRE ALARM DEVICE.
38. FIRE ALARM STROBE:
PROVIDE FIRE ALARM STROBE AND CONNECT TO TENANT'S JUNCTION BOX TO TIE INTO LANDLORD'S MAIN FIRE ALARM SYSTEM- FIELD VERIFY EXACT LOCATION AND REQUIREMENTS- THE DEVICE SHALL BE WHITE WITH RED LETTERS.
39. FIRE ALARM CEILING MOUNTED SMOKE DETECTOR:
PROVIDE FIRE ALARM CEILING MOUNTED SMOKE DETECTOR (CENTERED IN TILE OR 24" SEGMENT OF "SECOND LOOK" TILE IF APPLICABLE) AND CONNECT TO TENANT'S JUNCTION BOX TO TIE INTO LANDLORD'S MAIN FIRE ALARM SYSTEM- FIELD VERIFY EXACT LOCATION AND REQUIREMENTS:
40. FIRE ALARM REMOTE ANNUNCIATOR PANEL:
PROVIDE FIRE ALARM REMOTE ANNUNCIATOR PANEL- AND CONNECT TO FIRE ALARM CONTROL PANEL- FIELD VERIFY EXACT LOCATION AND REQUIREMENTS:
41. CONNECT TO SPARE 20 AMP, SINGLE-POLE CIRCUIT BREAKER IN EXISTING PANEL "PI". COMBINE TWO LIGHTLY LOADED CIRCUITS AND CONNECT TO NEWLY CREATED SPARE CIRCUIT FEEDER. VERIFY THAT NO NEARLY FULLY LOADED CIRCUITS ARE BEING TRANSFERRED TO THIS FEEDER. VERIFY THAT ADDITIONAL LOAD DOES NOT EXCEED THE RATED CAPACITY FOR THE PANEL OR THE PANEL'S ASSOCIATED FEEDERS AND OVERCURRENT PROTECTION.
42. ELECTRICAL DEVICES WITHIN ROOM ARE EXISTING TO REMAIN. MAINTAIN EXISTING CIRCUIT CONTINUITY.

FRCH
DESIGN WORLDWIDE
311 ELM STREET
SUITE 600
CINCINNATI, OH 45202
513 241 3000
www.frch.com

chico's
11215 METRO PARKWAY
FT. MYERS, FL. 33966



Schnackel
engineers.

☐ New York
 ☐ Omaha
 ☐ Los Angeles
 ☐

800-581-0963 www.schnackel.com

Soma

STORE NO:
5062

PROJECT LOCATION:
MIROMAR OUTLETS
10801 CORKSCREW ROAD
ESTERO, FL 33928
SPACE #: 407

DESIGN TYPE: 	
REVISIONS:	
REQUIRED BY: _____	DATE: _____
<hr style="border: none; border-top: 1px solid black; margin-bottom: 10px;"/> <hr style="border: none; border-top: 1px solid black; margin-bottom: 10px;"/> <hr style="border: none; border-top: 1px solid black; margin-bottom: 10px;"/> <hr style="border: none; border-top: 1px solid black; margin-bottom: 10px;"/> <hr style="border: none; border-top: 1px solid black; margin-bottom: 10px;"/> <hr style="border: none; border-top: 1px solid black; margin-bottom: 10px;"/>	
* INDICATES NO REVISION TO THIS SHEET	
<div style="display: flex; justify-content: space-around; font-size: 1.2em; font-weight: bold;"> DRAWN BY: CHECKED BY: </div> <div style="display: flex; justify-content: space-around; font-size: 1.5em; font-weight: bold; margin-top: -10px;"> JME GRS </div>	

TE CONSTRUCTION GROUP
KE JACKSON, TX
ONE: 979-285-0712
TE: THESE PRINTS HAVE BEEN REDU
50 PERCENT. SCALE WILL BE 50 PER
Date: 06/06/21 CMAA: 28403
WHAT IS NOTED ON PLANS

DRAWING TITLE:
**ELECTRICAL
POWER AND
SYSTEMS PLAN**

DATE ISSUED:
06/06/2017

PROJECT NO:
034138.000

DRAWING NO:

E1.0

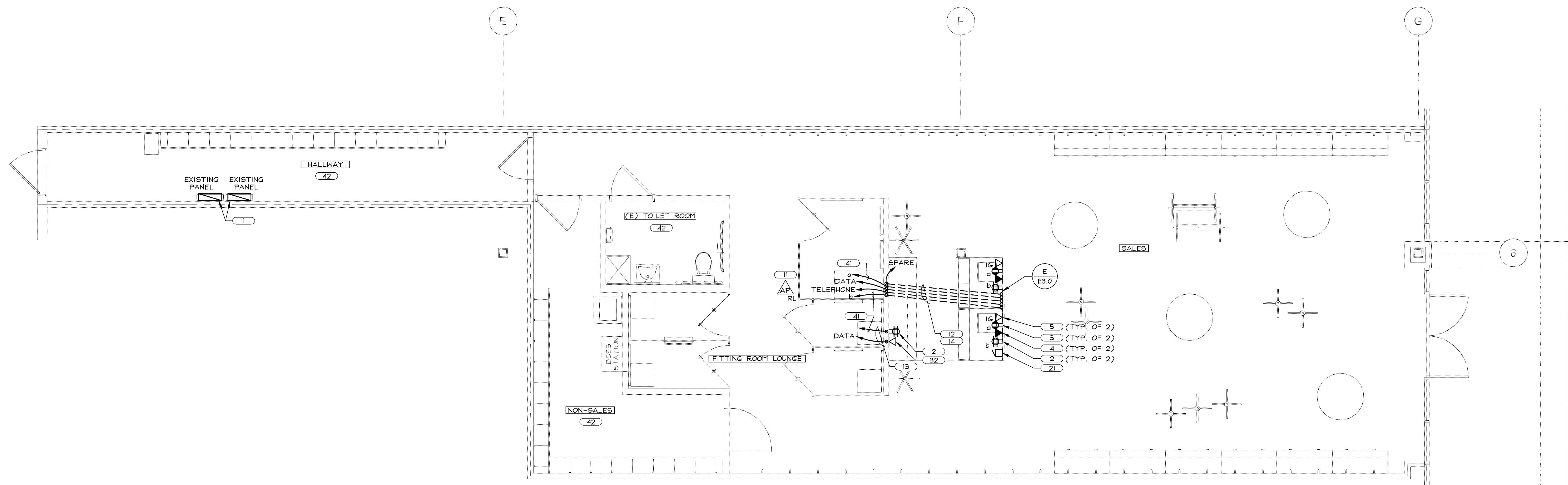
POWER PLAN GENERAL NOTES

R

POWER PLAN CODED NOTES

#

C



VERIFY ALL CONDITIONS
IN FIELD PRIOR TO BIDS.



POWER AND SYSTEMS PLAN

$$\frac{1}{4}'' = 1'-0''$$

A

E1.0